

WARNING

- To reduce the risk of INJURY or DEATH:
- Turn both the AC Power and Battery switches to OFF position BEFORE installing or servicing operator.
 - Replace ONLY with fuse of same type and rating.
 - Every installation is unique. It is the responsibility of the installer to ensure the barrier arm gate operator is installed in a safe manner. If the area surrounding the barrier arm gate operator is expected to have high pedestrian traffic, it is recommended that safety devices, such as Liftmaster photoelectric sensors or wireless edge sensors, be installed at the site.
 - See manual prior to servicing regarding maintenance and required safety testing.

To View Codes:

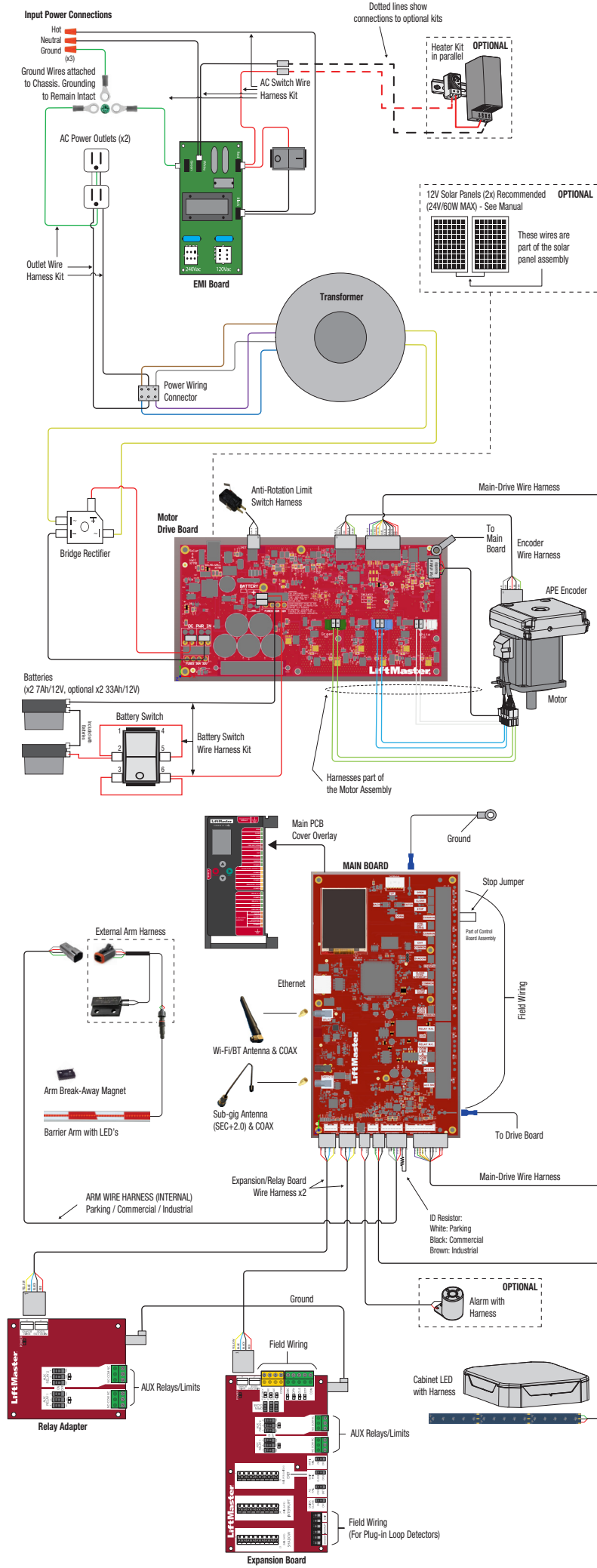
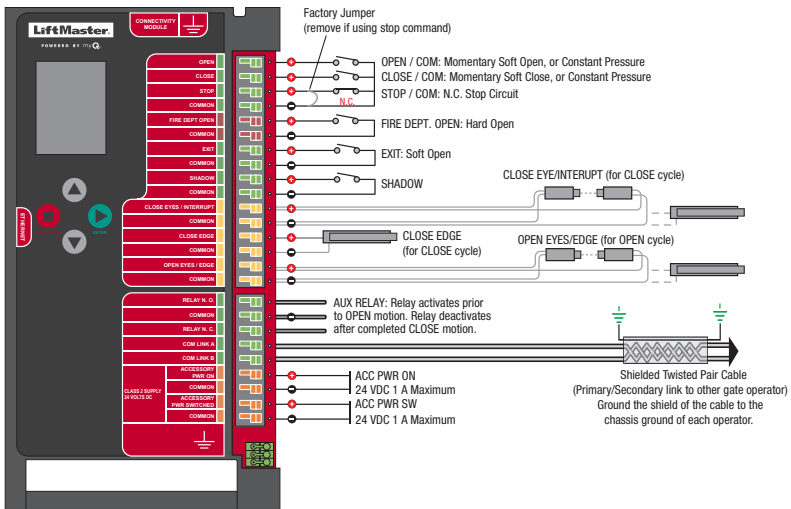
1. On LCD Display, navigate to "Maintenance > Event Log > ENTER".
2. Scroll Down the list to see the Event Log List.
3. Press ENTER to view the details of the selected Event Code.

Diagnostic Codes Table

Some codes are saved in the code history and some are not. If a code is not saved, it will briefly appear on the display as it occurs, then disappear.

- LiftMaster System ■ Installed System ■ Informational
- External Entrapment Detection ■ Inherent Entrapment Detection

Code	Display Text	Description	Potential Resolution
8	NO CONFIG	Configuration invalid or missing	The following settings were reset due to corruption of the previous configuration: <ul style="list-style-type: none">• Reversal Force• Open and Close limit positions• Arm Length• Language• Arm and Cabinet LED• Buzzer• Operator Sync• Timer-To-Close• Power Fail• Arm Speed Perform Adjustment and Programming procedures to set the limits and adjust default settings. If issue continues, replace the main control board.
14	NO LIMITS	Limit positions are not set or stored.	Limit positions are not set due to being a new product or factory reset was performed. Enter Limit Setup mode and set the limits.
31	CTRL BOARD	Main control board has experienced an internal error	Disconnect all power, wait 15 seconds, then reconnect power (reboot). If issue continues, replace the main control board.
32	VER MISMATCH	Main control board and motor drive board firmware versions are incompatible	Check FW Versions, replace main control board or motor drive board so that both boards have the same first (major) version number. If motor drive board version is not reported in display menu, verify motor drive board power and connection to control board. Disconnect all power, wait 15 seconds, then reconnect power (reboot). If issue persists, replace motor drive board.
34	APE ASM	Absolute Position Encoder error, not getting position information from encoder	Check APE assembly and wiring connections. Disconnect all power, wait 15 seconds, then reconnect power (reboot). If issue persists, replace the APE assembly.
35	OVER TRAVEL	Travel range exceeded	While learning limits, the arm position has exceeded the allowable travel range in the open direction. If still in Limit Learn menu, reverse direction of travel and check the following: <ul style="list-style-type: none">• Verify that the counterbalance spring assembly is installed in the correct position for the intended arm handing.• Verify that the arm bracket was in the correct orientation when the hub bolts were torqued.• Inspect the spring protection switch connections and cable.
36	ID MISMATCH	Current Product ID does not match stored Product ID	Was the main control board just replaced? If so, erase limits, enter limit setup mode and set limits. If not, disconnect all power, wait 15 seconds, then reconnect power before changing product ID harness.
37	PRODUCT ID	Product ID failure	Unplug product ID harness then plug back in. Disconnect all power, wait 15 seconds, then reconnect power before replacing product ID harness.
40	BATT OVERVOLT	Battery overvoltage	Too much voltage on the battery. Check harness.
41	BATT OVERCURR	Battery overcurrent	Possible short of the battery charge harness. Check harness. Make sure you do NOT have a 12V battery on a 24V system.
42	NO BATTERY	No battery at boot up	Check battery connections and installation. Replace batteries if depleted to less than 20V on a 24V system. Make sure there is NOT a single 12V battery on a 24V system.
43	EXIT LOOP	Exit loop error	Failure or missing loop (SHORT or OPEN - LiftMaster Plug-in Loop Detector only). Check loop wiring throughout connection. May be a short in the loop, or an open connection in the loop. If loop detector has been removed, disconnect all power, wait 15 seconds, then reconnect power (reboot).
44	SHADOW LOOP	Shadow loop error	Refer to LiftMaster Loop Detector Installation Manual to determine loop state.
45	INTRPT LOOP	Interrupt loop error	
46	EDGE BATT LOW	Wireless edge battery low	Replace batteries in wireless edge.
47	MOTOR DRIVE	Motor Drive Fault	Check motor drive connections. Disconnect all power, wait 15 seconds, then reconnect power (reboot). If issue persists, replace motor drive board.
48	HALL SENSOR	Hall Sensor Fault	Check motor and motor drive connections. Disconnect all power, wait 15 seconds, then reconnect power (reboot). If issue persists, replace motor.
49	MOTOR COMM	Motor Drive Communications Fault	Verify drive board power and connection to the main control board. Disconnect all power, wait 15 seconds, then reconnect power (reboot). If issue continues, replace motor drive.
51	NO ARM	No Arm detected in Arm Bracket	Arm is not installed/detected. Review: <ul style="list-style-type: none">• Verify the arm detection cable is connected to the arm bracket.• Verify the arm is securely installed within the arm bracket.• Verify the arm detection magnet is properly installed on the arm and aligned with the sensor on the arm bracket.• Inspect arm detection sensor, arm detection magnet, and cable for damage. If issue persists, replace sensor, magnet, and arm cable.
53	BROWNOUT	Brownout occurred	AC/DC board supply dipped below allowable level. Review power supply and wiring. If rebooting, ensure enough time for discharge of power to force a fresh boot.
54	OPERATOR COMM	Wireless second operator communication error	Check the second operator for power. If OFF, restore power and try to run the system. If powered, deactivate the wireless feature and then re-learn the second operator.
61	CLOSE EYE HELD	CLOSE EYE/INTERRUPT held	Check wired input on the main control board; check for alignment or obstruction; squeeze and release the edge and verify main board edge LED changes; check for eye alignment or obstruction.
62	CLOSE EDGE	CLOSE EDGE held	
63	OPEN EYE EDGE	OPEN EYE/EDGE held	
64	CLOSE EYE INTRPT	CLOSE EYE/INTERRUPT held (expansion board)	Check wired input on expansion board; check for alignment or obstruction; squeeze and release the edge and verify main board edge LED changes; check for eye alignment or obstruction.
65	CLOSE EYE EDGE	CLOSE EYE/EDGE held (expansion board)	
66	OPEN EYE EDGE	OPEN EYE/EDGE held (expansion board)	
67	WIRELESS EDGE	Wireless edge triggered extended time	Check wired input for wiring issue or obstruction; squeeze and release the edge and verify main board edge LED changes
68	WIRELESS EDGE	Wireless edge loss of monitoring	Check wireless edge inputs.
69	WIRELESS EDGE	Wireless edge triggered	If an obstruction occurred, no action required. If an obstruction did NOT occur, check inputs and wiring.
70	CLOSE EYE BLOCK	CLOSE EYE/INTERRUPT triggered, causing reversal, preventing close, or resetting TTC	If an obstruction occurred, no action required. If an obstruction did NOT occur, check alignment, inputs, and wiring on the main control board.
71	CLOSE EDGE	CLOSE EDGE triggered, causing reversal, preventing close, or canceling TTC	If using through-beam photoelectric sensors, ensure that both emitter and receiver are connected to inputs.
72	OPEN EYE EDGE	OPEN EYE/EDGE triggered, causing reversal or preventing opening	Refer to the accessory manual to ensure sensors are installed correctly.
73	CLOSE EYE INTRPT	CLOSE EYE/INTERRUPT triggered, causing reversal, preventing close, or resetting TTC	If an obstruction occurred, no action required. If an obstruction did NOT occur, check alignment, inputs, and wiring on expansion board.
74	CLOSE EYE EDGE	CLOSE EYE/EDGE triggered, causing reversal and preventing close or canceling TTC	If using through-beam photoelectric sensors, ensure that both emitter and receiver are connected to inputs.
75	OPEN EYE EDGE	OPEN EYE/EDGE triggered, causing reversal or preventing opening	Refer to the accessory manual to ensure sensors are installed correctly.
80	CLOSE EYE EDGE	Close input (EYE/EDGE) communication fault from other operator	Check inputs and communication method between operators, either wired bus or radio. Ensure operator is powered. May have to erase the wireless communication and reprogram the two operators.
81	OPEN EYE EDGE	Open input (EYE/EDGE) communication fault from other operator	
82	CLOSE EYE EDGE	Close input (EYE/EDGE) communication fault (expansion board)	
83	OPEN EYE EDGE	Open input (EYE/EDGE) communication fault (expansion board)	Check the connections between the main control board and the expansion board.
84	NON MONITORED	Non-monitored device detected on the wireless safety system	Non-monitored contact closure devices are not supported. Make sure connected devices are monitored. Check edges for proper orientation and resistive end cap connection.
85	CLOSE EYE EDGE EVENT	CLOSE EYE/EDGE triggered on paired operator, causing reversal and preventing close or canceling TTC	If an obstruction occurred, no action required. If an obstruction did NOT occur, check alignment, inputs, and wiring on paired operator.
86	OPEN EYE EDGE EVENT	OPEN EYE/EDGE triggered on paired operator, preventing opening	If using through-beam photoelectric sensors, ensure that both emitter and receiver are connected to inputs. Refer to the accessory manual to ensure sensors are installed correctly.
90	LOW VOLT	Low Voltage Input to Motor Drive Fault	Verify incoming power meets voltage requirement of operator. Verify battery voltage is above 20V. Disconnect all power, wait 15 seconds, then reconnect power (reboot). If issue persists, replace power supply.
91	FORCE LIMIT	Force limit exceeded	If motor stopped while opening, check for excess weight on arm. Check for obstruction. If no obstruction, check that the mechanical assembly is engaged and free to move. See "Limit, Speed, and Force Adjustment" on page 34. Check spring chart and ensure correct number of springs are installed.
93	RPM STALL	RPM / STALL detected	If motor stopped while opening, check for excess weight on arm. Check for obstruction. If no obstruction, check the operator wiring and that the mechanical assembly is engaged and free to move. Replace APE assembly. Check spring chart and ensure correct number of springs are installed.
95	DRIVE TEMP	Motor Drive Board temperature too high	Check ambient temperature and ensure it is within the operational ratings of the operator. Check that dust or other debris is not built up inside cabinet. Replace motor drive board if issue persists.
96	DRIVE CURR	Motor Drive Board current too high	Check connections to motor drive board. Power cycle and retry. Replace motor drive board if issue persists.
97	BATT DPLTD	Battery depleted (below 23 V)	Battery voltage has been drained to critical level. Restore AC or solar power and ensure battery recharges properly. Test batteries with suitable battery tester. Replace batteries if damaged, depleted, or older than 2 years. Always replace both batteries as a set. Do not mix old and new batteries or use mismatched types.
98	AC PWR LOSS	AC power loss, system operating on battery	Incoming power loss. Review: <ul style="list-style-type: none">• Input voltage.• Circuit breaker is not tripped.• AC Switch inside cabinet is in the ON position.• Transformer connections to EMI board connectors. If voltage is out of specification, consult an electrician.
99	MAINT DUE	Maintenance Cycle count reached, service operator	Complete maintenance and reset maintenance cycle counter.



Spring Count Table

Note: The Spring Count Table provides the correct number of springs required for the proper counterbalance of arm with a given functional length and accessory combination. Please refer to the manual for instructions on how to properly add/remove springs.

WARNING! Springs may be under tension. Prior to loosening or removing bolts or the end plate, follow the instructions in the "Removing Spring Tension" section of Operator Arm and Installation Options in the Manual.

Functional Arm Length (ft)	Bare Arm	One LED Strip	Foam Insert	Foam Insert, One LED Strip	Edge	Edge, One LED Strip
8	3	3	3	3	4	4
9	4	4	4	4	5	5
10	5	5	5	5	6	6
11	6	6	6	6	7	7
12	7	7	7	7	7	7
13	8	8	8	8	9	9
14	9	9	9	9	9	9

LiftMaster.com

© 2024, LiftMaster
All Rights Reserved
132-3338-010-A

Note

Use Copper Conductors Only
N'utilisez que des conducteurs en cuivre